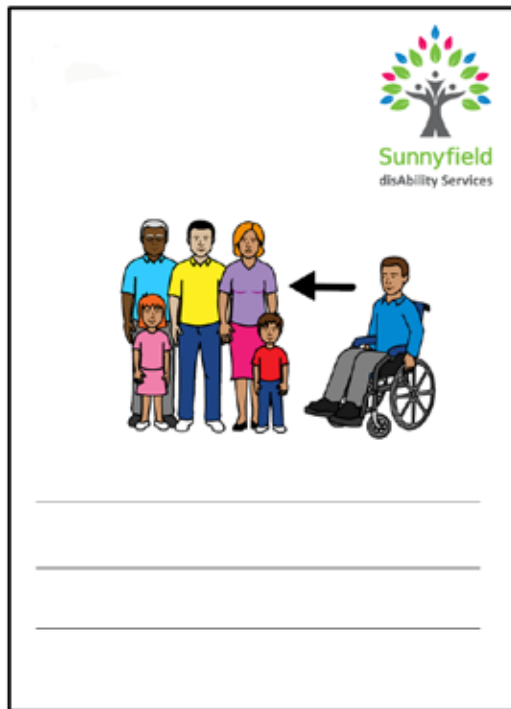


# DIVERSITY AND INCLUSION POLICY



**Sunnyfield Disability Services**



**Easy English**





## Hard words

This book has some hard words.

The first time we write a hard word

- the word is in **blue**
- we write what the hard word means.

## You can get help with this book



You can get someone to help you

- read this book
- know what this book is about



- find more information.

## About this book



This book tells you about our Disability and Inclusion Policy.

The policy says what we will do to make sure everyone gets the same opportunities

when they

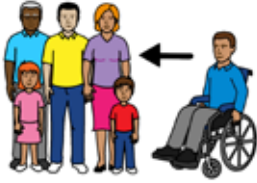
- use our services

or

- work for us.



For more information you can see the full policy on our website [www.tettertogether.net.au](http://www.tettertogether.net.au)



## Diversity and inclusion

We know that everyone is different.



The ways people are different could be

- race or ethnic background

- gender



- sexual orientation

- age

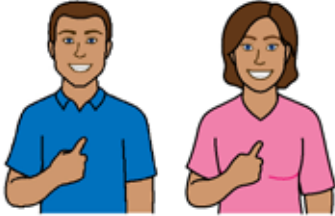


- religion

- physical and intellectual ability.

We want people to feel safe and happy about being different.

We want everyone to feel included in a group.



We will make sure we

- put people first
- give good support to people with disability.

We will support the needs of

- people who use our services



- families

- carers.



We will help the community to be inclusive.



## What we will do

:H ZLOO PDNH VXUH HYHU\RQH DW

" NQRZV WKDW SHRSOH FDQ EH GL

" WUHDWV HYHU\RQH WKH VDPH

" PDNHV VXUH SHRSOH IHHO LQFO

,I \RX IHHO OLNH \RX KDYH not EHH

\RX FDQ PDNH D complaint.

\$ FRPSODLQW LV ZKHQ \RX

" are not KDSS\

DQG

" WHRPHRQH HDVRQ

(PDLIHGEDFN#VXQQ\¿HOG RUJ DX

7KHUH DUH LPSRUWDQW WKLQJ  
PDNH VXUH ZH VXSSRUW D GLYHUV  
LQFOXVLYH FRPPXQLW\

## 1. How we treat people

:H ZLOO WUHDW HYHU\RQH  
" LQ D IDLU ZD\

" WKH VDPH

" ZLW~~K~~VSHFW

:H ZLOO OLVWHQ WR \RX

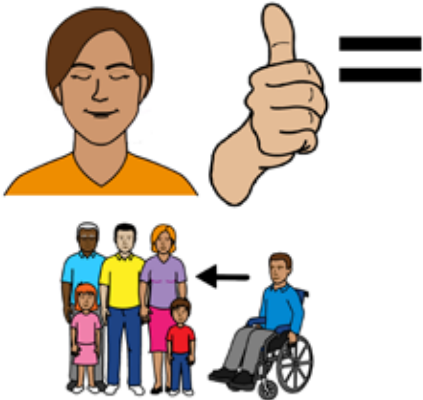
:H ZLOO KHOS \RX JHW ZKDW \RX

## 2. How we help people



We will help you be the best you can be.

We know people have different skills and qualities.



We will make an environment that is

- safe
- equal
- inclusive.

## 3. What our staff will do



Our staff will make sure that our workplaces

- are inclusive
- support diversity.



## Other information

:H KDYH RWKHU LQIRUPDWLRQ RQ  
VXSSRUWV XV WR PDNH D GLYHUV  
LQFOXVLYH FRPPXQLW\

)RU H[DPSOH

" 3HUVRQ &HQWUHG \$FWLYH 6XSSP

" 3ULY~~DR~~OLF\

<RX FDQ UH DG DOO RI RXU SROLF

RQ RXU ZHEVLWH ZZZ VXQQ\;HOG

## Contact us

)RU PRUH LQIRUPDWLRQ FRQWDFW

&DOO

:HEVLWH ZZZ VXQQ\;HOG RUJ DX

(PD LIHGEDFN#VXQQ\;HOG RUJ DX

1DWLRQDO 5HOD\ 6HUFLFH

TTY 133 677

7KHQ DVN IRU

6SHDN DQG /LVWHQ

7KHQ DVN IRU

,QWHUQHW UHOD\ XVHUV FRQQHFV

7KHQ DVN IRU



© Scope (Aust) Ltd. You may use this document for your own personal, non-commercial purposes only. You must not use the document for any other purpose and must not copy, reproduce, digitise, communicate, adapt or modify the document, or any part of it, (or authorise any other person to do so) without the prior consent of Scope (Aust) Ltd.

Scope's Communication and Inclusion Resource Centre

wrote the Easy English in November 2018. [www.scopeaust.org.au](http://www.scopeaust.org.au)

7R VHH WKH RULJLQDO FRQWDFW 6XQQ\¿HOG 'LVD

7KH 3LFWXUH &RPPXQLFDWLRQ 6\PEROV ‹

All Rights Reserved Worldwide. Used with permission.

ClipArt © Inspired Services, UK. [www.inspiredservices.org.uk](http://www.inspiredservices.org.uk)

Change People © 2011. [www.changepeople.org](http://www.changepeople.org)

